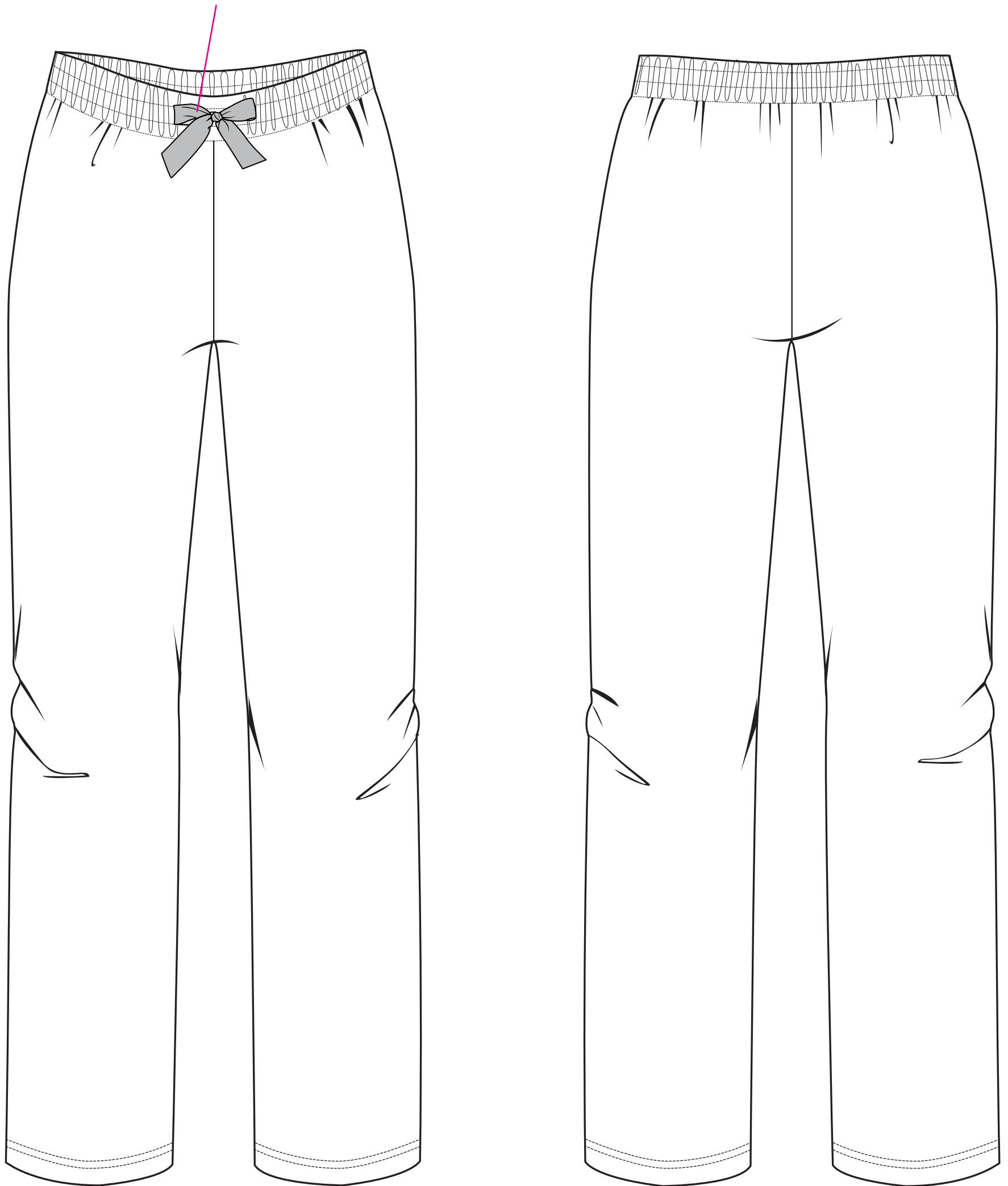


1/2" Twill tape or grossgrain functional drawstring



BASE SIZE MEDIUM SPEC - not final

Waist 1/2 circ. (relaxed)	15 3/4"
Waist 1/2 circ. (extended)	22"
Outseam including WB	41 3/4"
Inseam	31 1/2"
Front Rise including WB	11"
Back Rise including WB	15"
Hip 1/2 circ 3" down from top WB	18"
Thigh 1/2 circ 1" from crotch	12"
Leg opening 1/2 circ	8 1/2"
Waistband height	1 1/2"

DETAILS:

- * 92% Polyester 8% Spandex - Jersey 168 gsm
- * Spec and fit as per spec.
- * Twil tape or grossgrain drawstring
- * 5/8" twin needle coverseam at leg opening
- * 1 1/2" self fold over elasticized waistband
- * Self pouch for pants



FALL/ WINTER 2018
Style Number: CPSS18-8011

Printed Drawstring Sleep Pants

JUL 20, 2017

Snow Llama Print



Yoga Pug Print



Sleepy Sloth Print



Drawstring colour:



11-0103 TCX



15-5218 TCX



15-1626 TCX

Winter Unicorn Print



17-2031 TCX

Sheep Print



17-3920 TCX

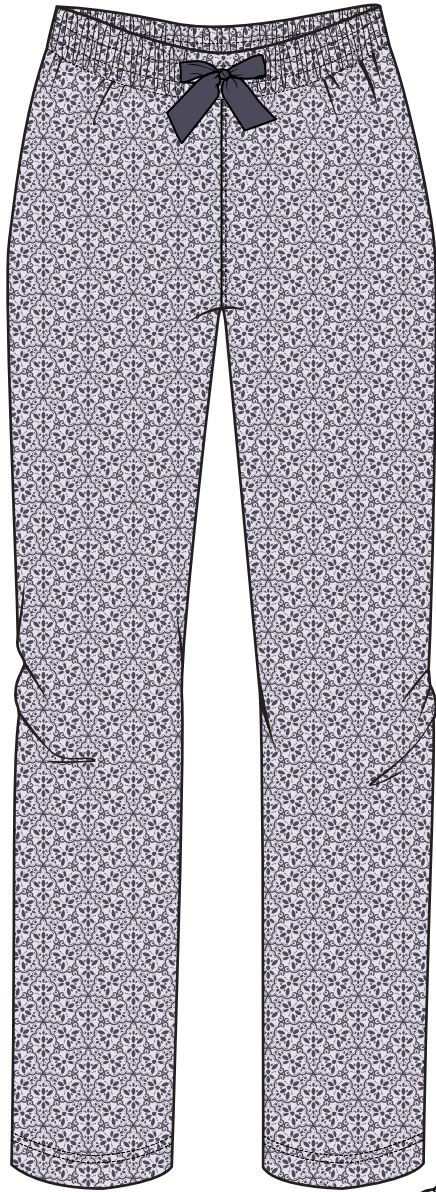
Bear Plaid Print



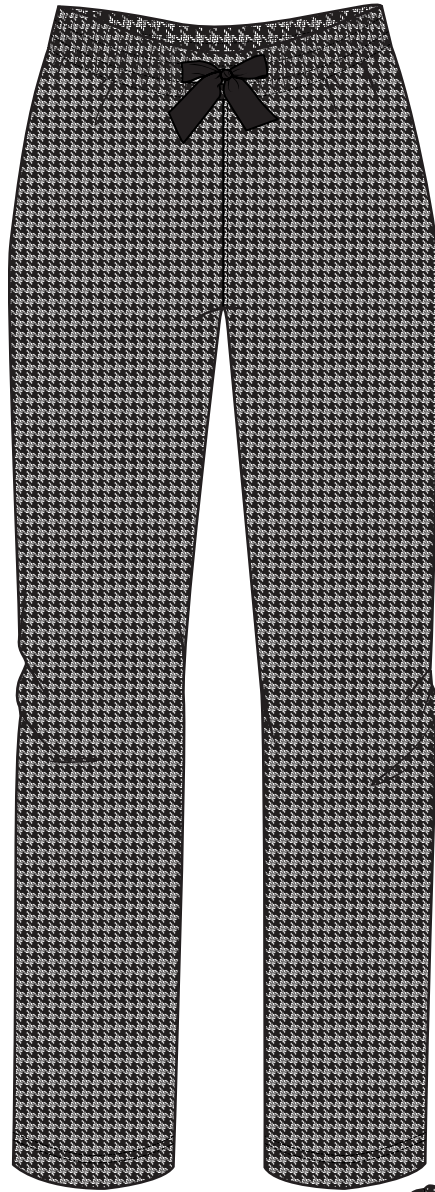
Black (must match print)

Printed Drawstring Sleep Pants

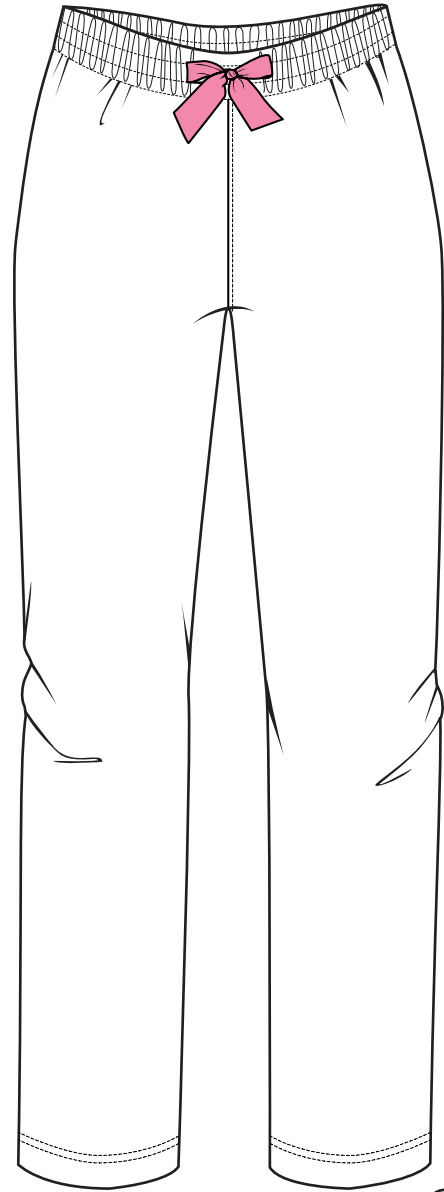
Lace Print



Knit Houndstooth Print



Paris Never Sleeps Print



Drawstring colour:



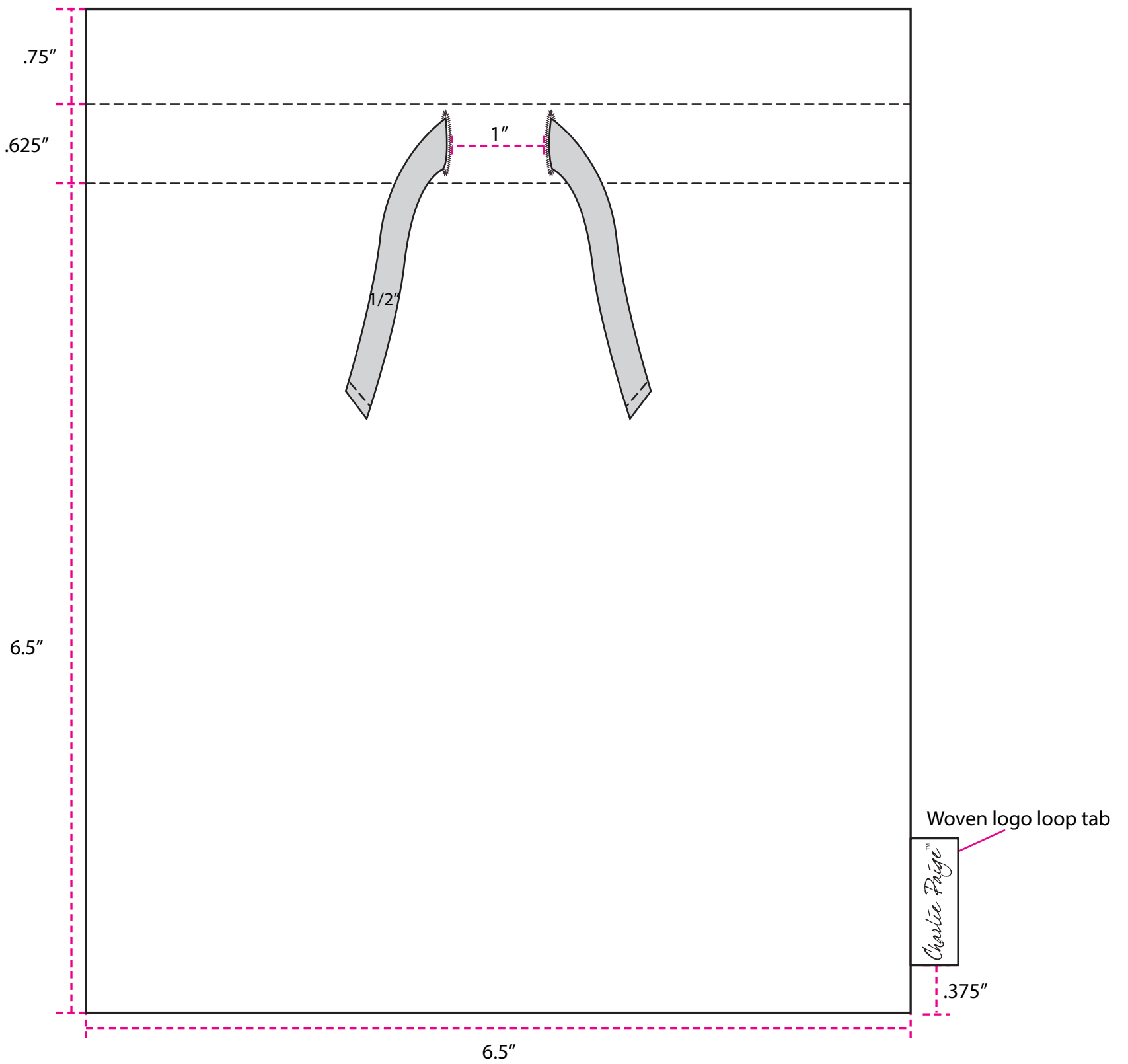
19-3915 TCX



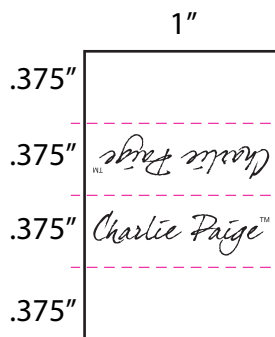
19-4008 TCX



15-2216 TCX



Woven logo loop tab
*Actual size



- DETAILS:
- * Jersey XXXgsm, same as the pants
 - * Twil tape or grossgrain drawstring that matches the pants